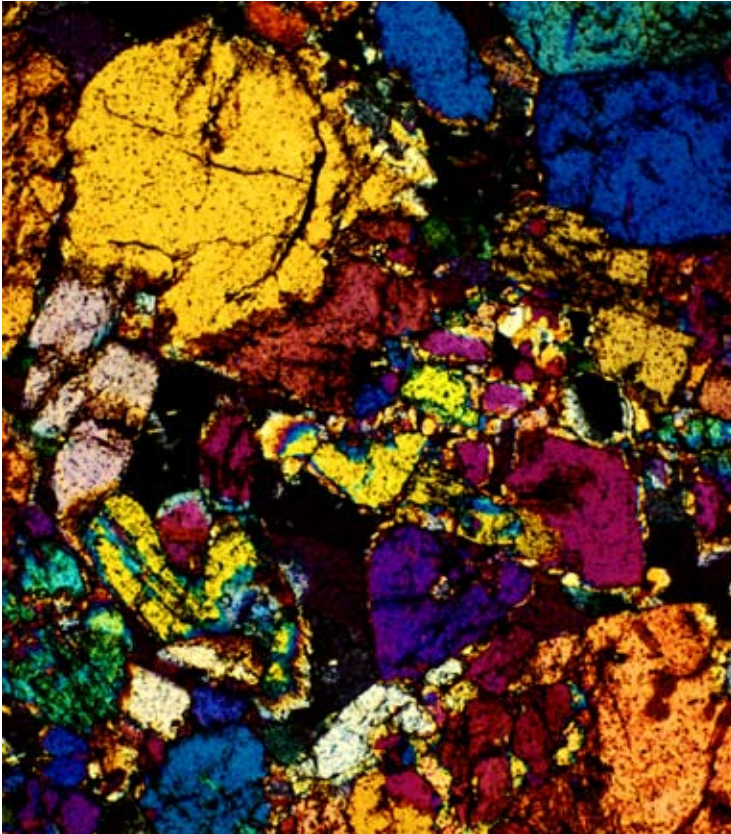
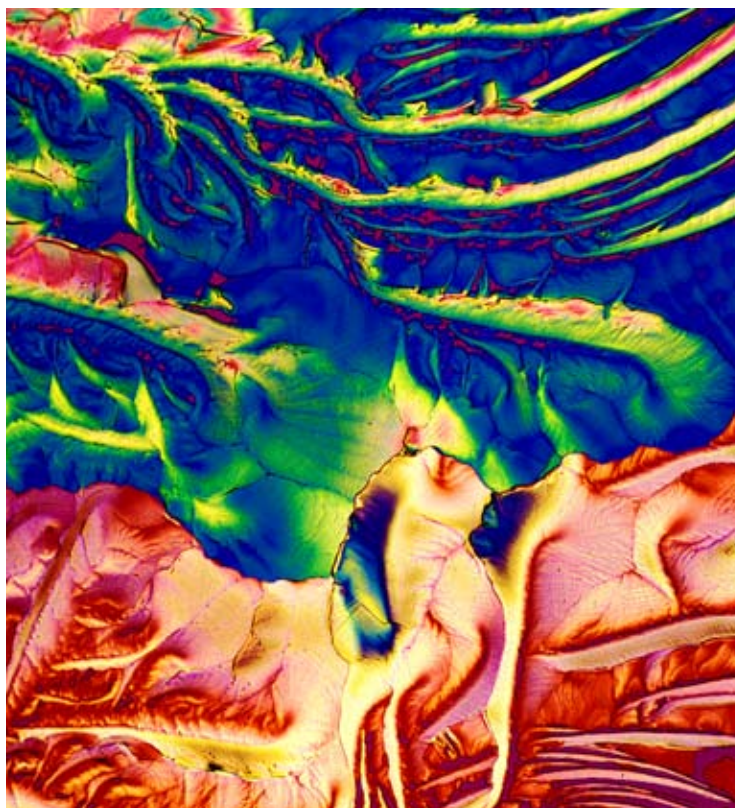


At the Institute

2009-2010 Annual Report



THE C.G. JUNG INSTITUTE OF SAN FRANCISCO



ABOVE: PHOTOGRAPH OF A PEARL, TAKEN THROUGH AN OPTICAL MICROSCOPE. THE PEARL IS ONE OF THE GEMSTONES THAT IS DERIVED FROM ANIMAL, AND IS THEREFORE DESCRIBED AS “ORGANIC.” BEING CHARACTERIZED BY TRANSLUCENCE AND LUSTER AND COMING FROM THE SEA, THE PEARL IS OFTEN SYMBOLIC OF TREASURE THAT COMES FROM THE DEPTHS OF THE PSYCHE.

COVER: PHOTOGRAPH OF AN EMERALD, TAKEN THROUGH AN OPTICAL MICROSCOPE. EMERALD IS COMPOSED OF THE MINERAL BERYL. A HIGHLY VALUED GEMSTONE FOR THOUSANDS OF YEARS, HEALING PROPERTIES HAVE BEEN ATTRIBUTED TO IT, INCLUDING THE CAPACITY TO CURE DISEASE AND DRIVE AWAY EVIL.

BOTH IMAGES COURTESY OF MOLECULAR EXPRESSIONS, THE FLORIDA STATE UNIVERSITY RESEARCH FOUNDATION, [HTTP://MICRO.MAGNET.FSU.EDU](http://micro.magnet.fsu.edu).

OUR INSTITUTE TODAY

The life of our Institute continues to be a context for creativity and change. Our Executive Director position became vacant over the past year, and we have retained the services of Adam Frey as an Organizational Consultant and Transition Manager as well as interim Administrator to help us with some of the ongoing stewardship duties. We are using this period of transition for reflective discussions about our Institute's administrative structures, asking ourselves what kind of leadership will best serve the Institute's evolving needs. It is exciting to have the chance to become more conscious in the way we ask others to carry out the Institute's business.

The Institute has also been looking as consciously as possible at its relationship to the wider world. An Ad-hoc Public Liaison Committee was appointed a year ago; this committee is composed of representatives of the various committees that have outward-facing aspects: Library, Extended Education, Development, Friends of the Institute, ARAS, Jung Journal, International Student, and Clinic. Its work has led to the creation of a new position, Public Liaison Coordinator, to provide administrative, logistical and communicative support for the Institute's public programs. We feel that the Public Liaison Committee can continue to carry the vision of our work beyond our own immediate circle and articulate the Jungian perspective for the benefit of the wider community.

Our training program has also been evolving. After three years of attention and work, the Ad Hoc Committee on Training has made a set of recommendations for changes in our training program. Some of these were recently approved by the Training and Coordinating Committee and the Executive Committee, and more will be examined in the coming year. In the time-honored manner that change is processed throughout the Institute, these recommendations will be presented in the fall to both the candidate group and the membership. In addition, our Child Analytic Training program, which became a reality in 2009 when a first core faculty of twelve Jungian child analysts was approved by the membership, is starting to make plans for the upcoming year. This will be reflected in public programs as well as new training opportunities.

As a living symbol of the way we are making our evolving presence felt by those who want to know more about us, our website's development reflects the development of the Institute as a whole. Its interactive capability now greatly expands our outreach, and will allow you, if you look us up at www.sfjung.org to keep abreast of our activities. You should know that it is also now possible to register on-line for programs offered through our Extended Education program. Visit us there often during the coming year, and you will see for yourself the vitality I see in our Institute as my presidency, but not my participation in this exciting community, comes to an end.

Thank you for your support,



Samuel Kimbles, *President, September 1, 2008 - August 31, 2010*

PROGRAMS AND SERVICES



IMAGE: A HEALING ELIXIR IN A GOLDEN GOBLET IS PROFFERED TO A SUPPLICANT.
DETAIL OF A MINIATURE PAINTING, CA. 1320-50 C.E., FRANCE.

The James Goodrich Whitney Clinic

The James Goodrich Whitney Clinic has been serving the San Francisco Bay Area for over forty years. We offer low fee services to adults of all ages who are unable to afford standard fees but are interested in longer-term depth psychotherapy informed by Jungian theory. This year we provided approximately 5,500 hours of low-fee therapy to nearly 200 people. Fees are calculated based on the ability to pay, and start at \$30 per hour.

In addition to providing low fee psychotherapy, the Clinic provides internships to psychotherapists in training under the able direction of Clinic Director Jeffrey Swanger, Ph.D. The success of the Clinic is due to the willingness of candidates and analysts to donate many hours of their time to seeing clients,

teaching and supervising interns. We are also indebted to the interns, who provide their skilled services without pay.

People making use of our services are often experiencing a period of psychological distress or facing painful life transitions. We see individuals and couples including a good number of students and people involved in the arts. We place a high value on taking an individual approach. The Clinic does not discriminate on the basis of gender, race, ethnicity, national origin, sexual orientation or religion.

For more information about Clinic services or internship positions, please e-mail Clinic Administrator Deborah Igoa-Kuhn at clinic@sfjung.org or call her at 415-771-8055, ext. 205.

Referral Service

The Referral Service is a free and confidential community service offered by a committee of volunteer analysts. They connect individuals, couples and families with a licensed Jungian analyst or candidate who matches their needs. During this past year, we have referred people with a wide range of issues, including depression and anxiety, issues regarding sexuality, addictions, school, work, and relationships. Interested persons may call 415-771-8055, extension 205, or e-mail clinic@sfjung.org for more information or a free consultation.

Friends of the Institute

To widen our community beyond those with the traditional status of analyst and candidate, Friends of the Institute offers another way of affiliating with the San Francisco Institute. It is open to anyone who supports our mission. In the past year, the Friends presented films made in collaboration by Jungian Analyst Dr. James Hillman and filmmaker Mark Kidell. Other gatherings of Friends have included presentations on Peter Abelard by Analyst David Tresan, a daylong examination of the art and music of Hildegard von Bingen, composer John Adams speaking on Thomas Mann's "Doctor Faustus," and the annual Winter Solstice gathering in a private home.

Friends currently has eighty active members and an expanded committee of seven. The 2010-2011 Friends season continues on September 26, featuring Shakespearean scholar Philippa Kelly on the theme of empathy in "King Lear," October 24 welcoming John Beebe who will present his paper "The Anima Singer," and a December 19 Solstice

Gathering. Early 2011 will bring gatherings on the themes

of poetry, more on Jung and music, visual art featuring Willam T. Wiley and Mary Hull Webster, and more. Friends sponsored reading groups are flourishing, with groups currently meeting in San Francisco, Marin County, the East Bay and the Peninsula. *Rhizome*, the newsletter of the Friends of the Institute, is issued quarterly. To find out more about Friends of the Institute, including information on membership, please contact Collin Eyre at friends@sfjung.org or by phoning him at the Institute at 415-771-8055, ext. 210.



IMAGE:

DANCE OF YOUNG MEN
AROUND A SACRED
CEREMONIAL TREE. AZTEC
PAINTING ON AMATL PAPER,
EARLY 16TH C., MEXICO.

The Referral Service connects individuals, couples and families with a licensed Jungian analyst or candidate who matches their needs.

The Virginia Allan Detloff Library

This year we were able to add the new International Journal of Jungian Studies to our list of journals to which we have on-line access, thanks to a generous donation by one of our members.

Analysts, candidates and library subscribers are pleased to be able to search current and past subscription journal issues from off-site through our website. Journal titles that we don't subscribe to can still be accessed through inter-library loan

requests to library staff, greatly expanding the information readily available to us.

Work continues on assessment, preservation, and documentation of our archival materials. The local library consortium in which we participate will be planning in the upcoming year for digitization of archival resources of member institutions, preparatory to seeking funding for this effort. As Librarian Marianne Morgan continues this project, her work will allow us to make the archival material we have collected over the years more available to the public..

We have hired a new Library Assistant, Salina Woo, who just finished her training in the library technician curriculum at SF City College. She is very skilled with computer software and has been a great help with circulation and reference assistance in the library. She plans to stay with us while she attends library school starting this fall.

Marianne has identified an appropriate



web-based platform for our catalog – Koha [which means 'gift' in Maori] an open source integrated library system. It was developed for a public library system in New Zealand in 2000, and has maintained its community centered and responsive orientation to development. This catalog system will allow us to do many new things: access the catalog from a computer anywhere, have password access to our own circulation records, request books, and when we have digitized audio and documents, be able

to access digital content directly from the catalog. To move to this on-line catalogue will require considerable time and effort, but will enable us to make knowledge about our general circulating collection and archival materials more available to the general public.

As it is now, the library, with more than 13,000 books, manuscripts, audio and videotapes, and over 100 journal titles, represents a source for the study of Jungian psychology unmatched west of the Rockies.

In addition to analysts, candidates, interns, and staff, over 100 subscribers and Friends of the Institute use the collection. The Institute website draws additional requests for information from students, writers, and researchers in psychology and the arts.

Members of the public can visit the library or join as subscribers by calling Librarian Marianne Morgan at 415-771-8055 ext. 207, or sending an e-mail to library@sfjung.org.

ARAS: The Archive For Research In Archetypal Symbolism



This year the Institute's ARAS collection of images was accessed through calls and visits by more than 100 people: therapists, analysts, writers, teachers, scholars, students, and individuals seeking to amplify special images. The digitization of the collection's 17,000 images and their scholarly text is now complete, allowing many more to access the collection online. Subscription access to the entire ARAS collection online can be obtained at www.aras.org, by calling 646-536-2632 or by sending an e-mail to info@aras.org.

Our Institute is one of the four American Institutes that participates in the Board of National ARAS. In an exciting recent development, the National ARAS, which has traditionally focused on imagery from pre-modern times, has teamed with the Art/Psyche Working Group (which, with our Institute, presented the Art and Psyche conference in 2008) to produce an online journal focusing more on contemporary images and psychological interpretations. We are happy to announce that through the generosity of National ARAS, this journal is available free of charge. To subscribe, e-mail info@aras.org.

ARAS is open to the public by appointment. To obtain more information about any ARAS service or to visit the archive, contact Consulting Curator Stacy Hassen, Ph.D. at 415-771-8055 ext. 214, or send an e-mail to aras@sfjung.org.

Publications

Our Institute is honored to have many talented and prolific authors among us. We are pleased to announce five new publications by our analysts this past year:

Farming Soul: A Tale of Initiation, by Patricia Damery was published in April, 2010 by Fisher King Press.

Naomi Lowinsky's new collection of poems, *Adagio and Lamentation* was published by Fisher King Press in June, 2010.

The Mystery of Analytical Work: Weavings from Jung and Bion by Barbara Sullivan came out in November, 2008, published by Routledge.

Visitation in a Zen Garden by Karlyn Ward was published in June, 2010 by Fisher King Press.

A collection of poetry by Paul Watsky, *Telling the Difference*, was published in April, 2010, by Fisher King Press.



IMAGE:

SCRIBE, WHOSE
WORK IS OVERSEEN
BY A BABOON,
SACRED ANIMAL
OF THOTH, THE
GOD OF WRITING.
SERPENTINE
STATUETTE, XVIII
DYNASTY, EGYPT.

Extended Education: Public and Professional

The mission of the Institute's Extended Education Committee is to facilitate dissemination of knowledge of analytical psychology through programs that serve the Jung Institute community, mental health professionals beyond the Institute, and the general public.

In October 2009, the Extended Education program sponsored a two-day conference on "The Living Symbol" during which five analyst members of the Institute spoke to their experience of living, transforming symbols in their lives and clinical work. Conference participants shared their own experiences and the space was alive with the reality of "the living symbol."

In April 2010, in honor of Earth Day, the Extended Education program hosted a conference called, "Listening to Earth/ Listening to Psyche." This conference, with participation from four Jungian analysts and a Navajo traditional healer reflected on the growing awareness of a critical imbalance in the relationship between human beings and the Earth. The conference presented unique and hopeful insights on how to live with this imbalance...and perhaps change it.

In June, the Extended Education program hosted a three-day conference in celebration of the publication of Jung's Red Book. Scholars and Jungian analysts from the United States, Europe, and Asia presented papers that looked at the Red Book from unique and varying perspectives. This conference was the first of its kind anywhere and drew a large and enthusiastic audience.



In addition to these three conferences, in the Fall of 2009 the Extended Education program produced events that covered such varied topics as: the way in which metaphor stimulates brain activity and facilitates change and development in the mind-brain being; how metaphors and paradoxes embodied in the deities from Ancient Egypt still resonate and speak to the modern soul; the relevance of Jung's method of treatment in psychotherapy; the continuing power and prevalence of the puer and puella archetypes; and Jung's multifaceted and complex relationship with India. In the Spring 2010 season, the Extended Education program produced events on these topics: the psychological factors that hinder and facilitate art making; a new look at Homer's *Iliad* with dramatic readings; authentic movement and dreaming as pathways toward the Self; and a Jungian perspective on addiction and how healing must occur in both daily life and archetypal realms.

Also, the Extended Education program produced an all-day workshop on the popular TV show, "In Treatment," focusing on the reality of 'cultural complexes' in doing psychotherapy. There were two Sunday afternoon poetry salons that brought together poets from the Jungian and psychoanalytic traditions, and the Deep River writing circle continued throughout the year.

A number of courses were offered to licensed psychotherapists only. They included the year-long Monday evening seminar on "Relatedness in Therapeutic Work," and classes on group process, the congruent ideas of Jung and Bion, and honing listening skills in the consulting room.

The total attendance for all these events was approximately 1100 with 650 different individuals taking part, representing a significant accomplishment for the Extended Education Committee and our Director of Extended Education, Baruch Gould. This was Baruch's last year in this position; after ten years he has resigned the position, although he will continue to work with the Extended Education Committee as a program consultant for the coming year while longer-term plans are being made for the Extended Education Program.

To receive our twice-yearly brochure or to inquire about any of our courses, public or professional, please call 415-771-8080 or e-mail us at exed@sfjung.org or visit www.sfjung.org.

Scholarship and Research

The Scholarship Fund is an endowed fund established in 1967 by a grant from

the Ernst and Eleanor Van Loben Sels Foundation for the purpose of encouraging scholarship and research from members and candidates. The amount of money available has varied over the years depending on fortunes of the Fund's investments, as has the maximum size of an individual grant, which is currently \$2000. Traditionally preference has been given to candidates or to those who have not received grants in the past.

Grant applications submitted by May 15th will be reviewed by the committee and applicants notified of the committee's decision the following month.

The committee did not receive any research applications this year. Tom Kirsch requested that our Institute make a donation of \$1500 to the Library of Congress Red Book project, and funds were dispersed for that purpose. The remaining funds were used to defray the annual increase in the Candidates' tuition.

The Analytic Training Program

In September 2009 three new candidates and an international scholar from Colombia were welcomed to begin their training. Currently twenty-six highly qualified professionals—licensed psychologists, psychiatrists, clinical social workers, and marriage and family therapists—are training to become certified Jungian Analysts at the Institute. Holding fast to the central tenets of our training program, which is the study of Jungian theory and clinical techniques necessary for analytical work, we also highlight experiences that are intended to facilitate individuation. The values of mutuality

and collaboration are inherent in our constantly evolving training program; thus in this last year we have instituted an open files policy to allow for more transparency of the training committees' work. Additionally we have initiated the use of a process observer in the transitional meetings to provide additional support in maintaining the integrity of committee deliberations. For more information about the training program consult the Analytic Training Program on our website (www.sfjung.org), e-mail us through ceyre@sujung.org, or call Collin Eyre at 415-771-8055, ext. 210.

Child Analytic Training

For many years there has been an interest in developing a training program for the Jungian analysis of children and adolescents at the C. G. Jung Institute of San Francisco. Although our members predominantly work with adults, there are always been a subgroup of those who work analytically with children and adolescents. One of the principal benefactors of our Institute was herself a Jungian child analyst, Frances Wickes. Throughout our history,

we have enjoyed strong collegial ties to the Jungian Child Training Program in London where some of our child analysts have spent time in training. After several years of studying the feasibility of creating such a program for ourselves, a generous grant made by one of our members, Dr. Kay Bradway, has made the idea of a child training program a reality. In the fall of 2009, the Institute welcomed a core faculty of twelve certified Jungian child analysts. They are currently members of the Institute who will have been certified by an outside group of Jungian child analysts. It is anticipated that the first group of child analytic trainees will begin in the fall of 2011.

The Child Analytic Training Program at the Institute is a two-year program composed of monthly conferences and seminars intended to provide a comprehensive training in Jungian analytic work with children. The trainees will be provided with a rich curriculum of Jungian and post-Jungian readings for the first year and an infant observation seminar for the second year. Clinical case conferences and individual case supervision will be ongoing for the two years.

The International Analytical Psychology Student Program

This unique training opportunity is offered biennially to a selected individual from outside the United States who does not have access to full training in analytical psychology within his or her own country, even though the person may already be at the educational level of a mental health professional. An



IMAGE: YOUNG ACHILLES IS CARRIED TO HIS TUTOR, THE CENTAUR HEALER CHIRON, DETAIL ON TERRA COTTA VESSEL, CA.500 B.C.E., GREECE

International Student lives in the Bay Area for two years, and sometimes longer. They attend seminars with our first- and second-year analytic candidates and engage in graduate-level study at the Institute of Transpersonal Psychology in Palo Alto.

Our seventh International Student, Inés De la Ossa Izquierdo, from Bogota, Colombia, is in her second year of training at the Institute. Our sixth International Student, Manasa, who is from India, is continuing here, now starting her fourth year of training. Like our previous International Students (from Korea, Bulgaria, China, Poland, Hungary, and India) they are receiving tuition for their seminars at the Jung Institute and for graduate work at the Institute of Transpersonal Psychology free of charge. Under the supervision of the Clinic Director they see patients in psychotherapy in the James Goodrich Whitney Clinic of the Institute.

The International Student also receives clinical case consultation and personal analysis from Institute analysts, who donate their time. We are very grateful to these analysts and to the Institute of Transpersonal Psychology for making this program possible, as well as to the analysts and others in the Institute community of donors who contribute money each year to help these students with the considerable expenses of living in the Bay Area.

Although the International Student is not being trained to become a Jungian analyst, she or he is given a fine start for

the ongoing study and clinical application of analytical psychology. In the twelve years that our program has been in existence, five of the six International Students have elected to pursue formal analytic training through the International Association for Analytical Psychology. Three have completed their studies and are now analysts. Others have served or are serving as founders or presidents of Developing Groups recognized by the International Association for Analytical Psychology, a role that allows them to share their skills with other clinicians in their home countries. In this way our International Students have been catalysts for bringing more Jungian training to their own countries.

The Analysts of the C.G. Jung Institute of San Francisco

One hundred thirty-two local analyst members of the Institute, about equally women and men, carry on the work of Jungian analysis in the Bay Area. They have all been licensed by the State of California and trained and certified in analytical work; individually they are members of the International Association for Analytical Psychology (IAAP). The Institute is blessed with an extraordinarily committed, active, and generous corps of analysts. More than sixty percent of analyst members volunteer at the Institute. The hours these men and women give yearly to unpaid teaching, supervising, organizing, planning, and carrying out our programs are fundamental to vibrant life at our Institute. Most members also donate to the Institute, beyond their substantial annual dues.

JUNG JOURNAL: Culture & Psyche

Jung Journal: Culture & Psyche is entering its third year and now has an established relationship with its publisher, University of California Press Journals.

The Institute continues to retain complete editorial control, while bringing the quarterly to an international audience online and in print. The Editorial Board is composed of analysts and scholars from around the world, including Brazil, Bulgaria, Japan, Korea, Switzerland, the U.K., and the U.S. All articles published in *The San Francisco Jung Institute Library Journal* (1979-2005) and *Jung Journal* are available online to subscribers.

We continue to have peer-reviewed articles on a variety of subjects of interest to our readership.

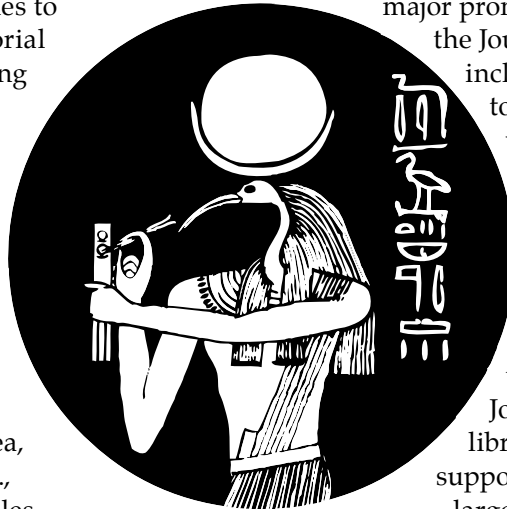
In Fall 2010, we are particularly pleased to release a special issue on same sex marriage, one that we hope will be a uniquely thoughtful contribution to the continuing worldwide volatile discourse on the topic.

excellent and helpful public relations staff at UC Press. UC Press has shown a great deal of confidence and excitement in using their own grant monies to do

major promotion campaigns for the Journal. These campaigns include direct marketing to domestic libraries, as well as consortia buying for libraries in Western Europe and the U.K. We launched a major campaign to contact academic colleagues and alumni willing to help promote the Journal to university libraries, a campaign

supported by several in the larger Institute community. We also contacted every Jungian group in the world. We are asking our membership for continued help with suggestions of journals and publications that may carry an ad for the Journal.

We are happy to offer all programs at the Institute free advertising in the Journal, as space permits. We have been focused this year on increasing our connections with those committees at the Institute also dealing with the public.



All articles published in *The San Francisco Jung Institute Library Journal* (1979-2005) and *Jung Journal* are available online to subscribers.

The International Association for Analytical Psychology (IAAP)

The IAAP is the international accrediting body of Jungian analysts throughout the world. Begun in Zurich in 1955, it now has more than 2500 analyst members and comprises over fifty member societies worldwide. In the past three years, four new developing groups have been admitted: Romania, Malta, Shanghai and Taipei.

The IAAP accredits the training of Jungian analysts, supports the development of analytical psychology where none is available, and furthers the knowledge and experience of analytical psychology at its international conference every three years. This year marked the XVIIIth International Congress, which was held in Montreal in August 2010.

Our Institute and its members are very active in the IAAP. We were one of nine institutes worldwide elected to send a

representative to the Executive Committee for the past three year term, which was completed in August 2010. Past President Marjorie Nathanson served in this role, where she chaired the Society Applications Subcommittee and the Mediation Working Party and was also on the Honorary Members and Governance Subcommittees. Past President Richard Willetts has been Chair of the Ethics Committee and served as parliamentarian at the Delegates' Meeting of the 2010 Congress. Margo Leahy is on the Child and Adolescent Working Party. Past President John Beebe and our interim director, Adam Frey, are on the Fundraising Subcommittee.

The history of our commitment to the IAAP is a long one. Past President Tom Kirsch served as IAAP Vice President for several terms and then served two terms as President. In all, his tenure as an IAAP officer spanned 18 years. Currently he and Past President Jean Kirsch have been active in forming the Developing Group in Taipei.

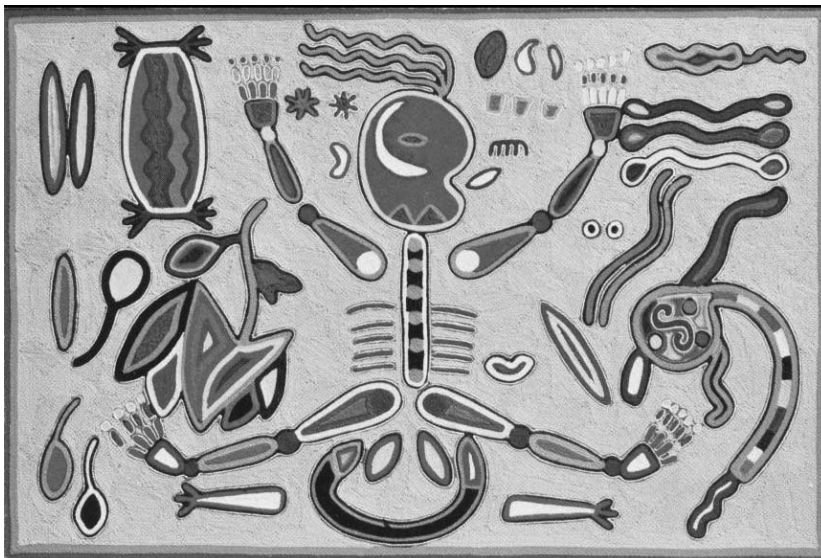


IMAGE:
DISINTEGRATION
OF A SIMPLE FARMER
WHO TRANSFORMS
INTO PLANTS,
REPRESENTING
THE PRIMORDIAL
PSYCHE. GIVING
WAY TO A NEW LIFE
SUPPORTING FORM.
YARN PAINTING,
1973 C.E., MEXICO

PEOPLE AND OTHER RESOURCES

Time and money are precious resources, and the Institute relies on the many people in our community who are generous with both. Without the generosity of more than 200 individuals and organizations, we could not continue to provide the quality of healing and education that is at the heart of the San Francisco Jung Institute. The impressive number of hours donated by analysts, candidates, and other community members is a sign of the pleasure and dedication that our community experiences in Jungian work.

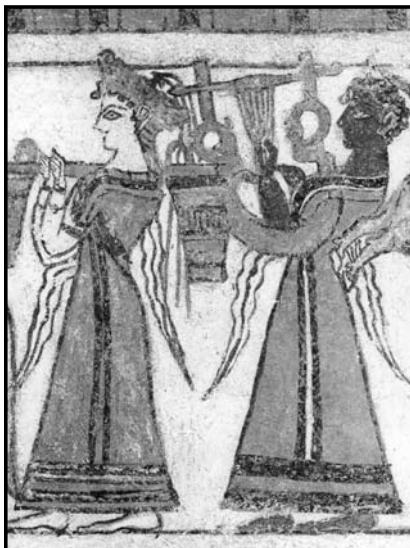
We owe a continuing debt of gratitude to the Frances G. Wickes Trust. One of the seminal American Jungian analysts, Frances Wickes authored *The Inner World of Childhood* (1927), *The Inner World of Man* (1950) and *The Inner World of Choice* (1963). The bequest that she left to carry on the work of Analytical Psychology in the United States forms the foundation of our Endowment and has been the bedrock support of our Institute's activities for almost thirty years. We honor her generosity by a careful stewardship of these gifts.

Without the generosity of many individuals and organizations, we could not continue to provide the quality of healing and education that is at the heart of the San Francisco Jung Institute.

This year the Development Committee hosted three events to thank Institute donors and to encourage involvement in the Institute. On Sunday, October 18, 2009, Betty De Shong Meador offered "The First Poet of the Gods and Goddesses," lively discussion of her present views of the dynamic and poignantly recorded poems by the priestess Enheduanna in her Temple Hymns and their relevance to our psychological lives today.

On January 31, 2010, the Development Committee and Friends of the Institute hosted a film by Carolyn Fay, "At the Threshold," which shows how within a trusting therapeutic relationship Authentic Movement, Sandplay, and other expressive techniques can give form to fantasy and foster active imagination—a dialogue

with the unconscious that permits its meaning and value to be integrated by individuals doing deep inner work. The discussion after the film was facilitated by analyst members Joan Chodorow, Barbara Holifield, Tina Stromsted and Advanced Candidate, Robin Greenberg.



On Friday, April 30th, we joined forces with Arion Press founders, Andrew Hoyen and Diana Ketchum, to host a donor event at the Arion Press in the Presidio welcoming the publication of Jung's Red Book. The donor



event was attended by 150 people. We hosted a panel of analyst members Tom Kirsch, Susan Bostrom-Wong, John Beebe and Suzanne Wagner, each providing a different view of Jung's most sustained attempt to recover, listen to and respond to the voices of his own soul.

This coming year, 2010/2011, the Development Committee will be hosting a series of Red Book Dialogues with prominent Bay Area teachers and writers. Zoketsu Norman Fischer of the San Francisco Zen Center will be in conversation with analyst Richard Stein on October 22, 2010; Jack Kornfield of Spirit Rock Meditation Center will talk with

analyst Dyane Sherwood on November 12, 2010; author Susan Griffin will speak with analyst Tom Singer on February 4, 2011; writer Maxine Hong Kingston will be in dialogue with poet/analyst Naomi Lowinsky and psychologist

Rhoda Feinberg on March 25, 2011. We are very excited about these events and hope you will be able to join us. Please check our website for details.

The Institute welcomes bequests and gifts of stocks and retirement plan assets, as well as current monetary donations. We are a registered tax-exempt 501(c)(3) organization. We encourage you to consult your financial advisor about the tax benefits of planned giving.

For more information on how to become a donor and receive invitations to future events, call Collin Eyre at 414-771-8055, ext. 210 or e-mail Collin at pa2@sfjung.org.

This coming year, 2010/2011, we will be hosting a series of Red Book Dialogues pairing member analysts in conversation with prominent Bay Area teachers and writers.

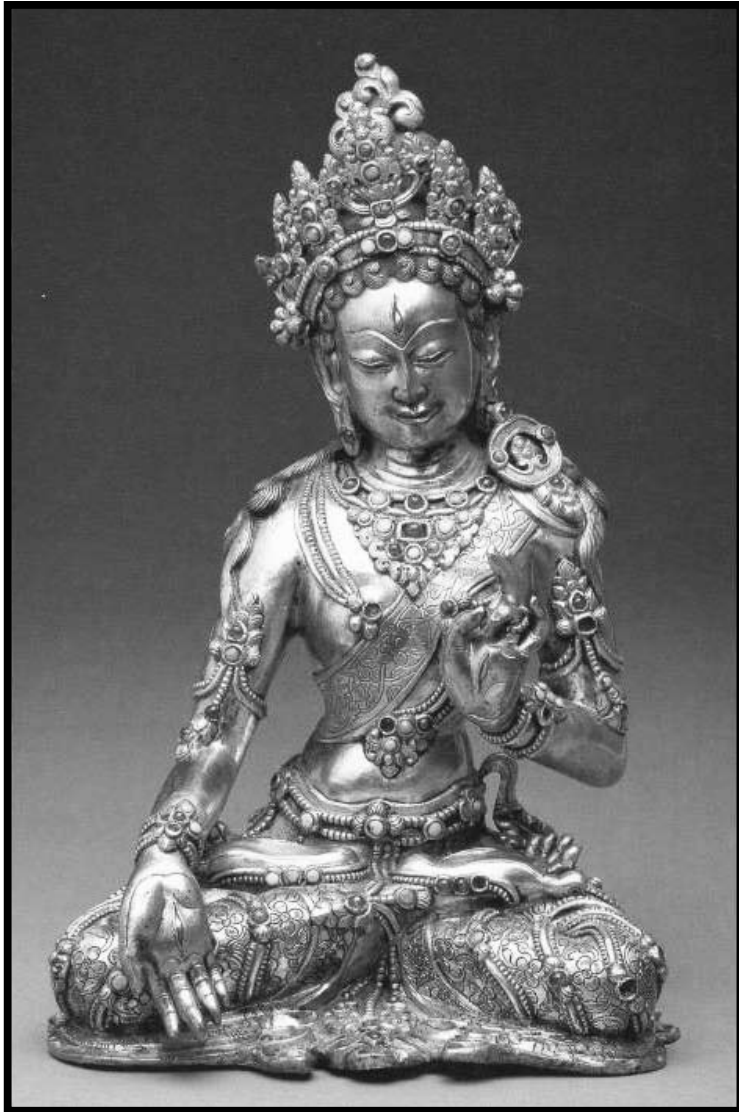


IMAGE: WHITE TARA EXTENDS HER RIGHT HAND IN THE "BOON-GRANTING GESTURE" OF COMPASSION. SCULPTURE, SILVER, GOLD AND SEMIPRECIOUS GEMS, 17TH CENTURY C.E., TIBET.

DONORS JULY 2009 - JUNE 2010

ANNUAL CAMPAIGN

Thea Adams	Penelope Dinsmore	Frances Lana
Paul Albert	Kate Donohue	Martha Lawlor
Maria Alex	Claire Douglas	Margo Leahy
Claire Allphin	Laurie Edwards	Chie Lee
Richard Alongi	Brian Feldman	Elizabeth Lewis
Scott Alvarez	Paul Fishman	Gale Lipsyte
Lauren Artress	Ruth Foster	Diane Long
Shira Barnett	Ann Frances	Sandy Marcus
Johanna & Tom Baruch	Lynn Alicia Franco	Johanna Mayer
Ellen Becker	Adam Frey	Fritz Maytag
John Beebe	Harriet Friendman	Betty De Shong Meador
Carol Benak	Amy Gage	Norman Meinke
Sheri Benjamin in Honor of Sally Kaufmann	Gail Graham	Jill Mellick
Jean Shinoda Bolen	Robin Greenberg	John Miles
Sal Bonavita	Helen Griffin	Carol Miller
Susan Bostrom-Wong	Gail Grynbaum	Phillip Moffitt
Elisabeth Bower	Mary Cay Gundry	Gordon Murray
Mary Boyvey	Mary Hargardon	Karen Naifeh
Mervyn Brenner Foundation	Lauri Harper	Marjorie Nathanson
Sarah Brown	Christine Hejinian	Eileen Nazzaro
Kathleen Burgy Trust	Ravenna Helson	Deborah O'Grady
Marion Burke	Don & Louise Heyneman	Katherine Olivetti
Susan Calfee	Gareth Hill	Stephen W. Olmsted
Tessamarie Capitolo	George & Ann Hogle	Ruth Palmer
Elizabeth Chamberlain	Barbara Holifield	Bonnie & Richard Payne
Rusa Chiu	Kristina Holland	Neville Powers
Joan Chodorow	Sally Holland	Liza Ravitz
Virginia Choo	Valerie Hone	Mike Reding
Brian and Marie Collins	Virginia Humphrey	Tom Reisdorf
Roberta Corson	IAAP	William Rhodes
Peter Coukoulis	Alex & Florence Irvine	William Riess
Carl Culberson	Steven Joseph	Julie Roberts
Donald Harms & Patricia Damery	Viera Kair	Janet Robinson
Ruth DeHovitz	Shirley Kaiser	David Ross
Levon Der Bedrossian	Sally Kaufmann	Seth Isaiah Rubin
Diane Deutsch	Jean Kirsch	Alan Ruskin
	Corinne Kopatz	Susan Ruskin
	Neil Kostick	Neil Russack
	Leonard Kreit	Lynda Schmidt
	Byron Lambie	Peter Sheldon

Jean Shutes
Ellen Siegelman
Margaret Skinner
Frances Slocumb
Suzy Spradlin
Nancy Steinhaus
John Steinhelber
Mary Stephens
Molly Merrill Sterling
Jane Alexander Stewart
Ann Strack
Tina Stromsted
Mark and Barbara Sullivan
Joanne Szybalski
Helen Tait
S.S. Taylor
Susan Thackrey
Frances Tobriner
Phyllis Stowell Travis
David Tresan
Dennis Turner
Paul Turner
Regina Ullendorff
Mary Valtierra
Janet Vega
Charlotte von der Hude
Louis Vuksinick
Suzanne Wagner
Karlyn Ward
Paul Watsky
Wilfred Weeks
Betty Wheelwright
Deborah Whitney
Richard Willetts
Peggy Winnett
Scott Wirth
Bryan Wittine

DESIGNATED GIFTS

ARAS
Carol Benak
Ruth DeHovitz
Penelope Dinsmore
Kate Donohue
Janet Robinson
Molly Merrill Sterling
Tina Stromsted

CLINIC

Shira Barnett
Kathleen Burgy Trust
Elizabeth Chamberlain
Kristina Holland
Karen Naifeh
Janet Robinson
Mary Valtierra
Wilfred Weeks
Deborah Whitney

LIBRARY

John Beebe
Sheri Benjamin in
Honor of Sally Kaufmann
Tessamarie Capitolo
Byron Lambie
Diane Long
Phillip Moffitt
Suzy Spradlin
Regina Ullendorff

JUNG JOURNAL

Carol Benak
Tessamarie Capitolo
Rusa Chiu
Lynn Alicia Franco
Robin Greenberg
Christine Hejinian
Valerie Hone
Viera Kair

Jill Mellick
Janet Robinson
Jean Shutes
Jane Alexander Stewart
Joanne Szybalski
Helen Tait
David Tresan
Regina Ullendorff
Suzanne Wagner
Karlyn Ward
Betty Wheelwright

EXTENDED EDUCATION

Thea Adams
Shira Barnett
Roberta Corson
Kate Donohue
Lynn Alicia Franco
Mary Hargardon
Christine Hejinian
Kristina Holland
Norman Meinke
Nancy Steinhaus
Janet Vega
Suzanne Wagner
Bryan Wittine
Donated Services
James Bae
Samuel Kimbles
Thomas Kirsch
Seth Robbins
Patricia Sohl

INTERNATIONAL STUDENT

John Beebe
Jean Shinoda Bolen
Rusa Chiu
Joan Chodorow
Brian Feldman
Lynn Alicia Franco
Christine Hejinian

Gareth Hill
Viera Kair
Jean Kirsch
Johanna Mayer
Gordon Murray
Janet Robinson
Suzy Spradlin
Tina Stromsted
Dennis Turner
Suzanne Wagner

**FRIENDS OF THE
INSTITUTE**

Shira Barnett
Ravenna Helson

**BUILDING
ENHANCEMENTS**

John Beebe
Ryan Bush
George and Ann Hogle

GIFTS IN KIND

Arion Press: Diana Ketchan
and Andrew Hoyer
Ryan Bush
Kelly Cannon
Norma Churchill
Jeff deMattos
Diane Deutsch
Grabhorn Institute
Bonnie Payne

VOLUNTEERS

Sarah Brown
Endowment
Charles Garfield
Board, Extended
Education, Jung
Journal, Research

Louise Heyneman
Finance, Development
Friends of the Institute
Don Maffly
Board
Deborah O'Grady
Friends of the Institute
Richard Payne
Board
Phyllis Stowell
Friends of the Institute

Rick Tarnas
Board, Extended
Education

Charlotte von der Hude
Board, Development
Alice Walker
Board

Stephen Walsh
Board
Betty Wheelwright
Board, Personnel

Preston Wong
International Student

CLINIC VOLUNTEERS

Intern Therapists

Anett Atman
Annie Botha
Ana Berezovskaya
Alexandra Collins
Melissa Kohner
Julie Lesperance
Nitzan Shrira

International Student

Inés De la Ossa Izquierdo

Former Intern

Raymond Buscemi, PhD

Analyst Therapists

Claire Allphin, PhD
Scott Alvarez, PhD
Shira Barnett, MSW
John Beebe, MD
Maria Ellen Chiaia, PhD
Rusa Chiu, PhD
Carl Culberson, PhD
Lauren Cunningham, MSW
Patricia Damery, MA
Diane Deutsch, PhD
Gale Grynbaum, RN, PhD
Christine Hejinian, PhD
Gareth Hill, MSW, PhD
Justin Hecht, PhD
Valerie Hone, PhD, MFT
Steven Joseph, MD
Sally Kaufman, MD
Sam Kimbles, PhD
Jean Kirsch, MD
Marty Lawlor, MFT
Elizabeth Lewis, MD
Naomi Lowinsky, PhD
Carol McRae, PhD
Karen Naifeh, PhD
Andrew Neufeld, PhD
William Riess, PhD
Janet Robinson, MFT
Alan Ruskin, PhD
Susan Ruskin, MSW
Virginia Beane Rutter, MS
Margaret Skinner, MFT
Suzy Spradlin, PhD
Tina Stromsted, PhD
Barbara Sullivan, MSW
Dennis Turner, MD
Alan Vaughan, PhD, JD
Karlyn Ward, PhD, LCSW
Catherine White, PhD
Steven Zimmelman, PhD

Candidate Therapists

Guy Albert, PhD
Richard Alongi, MA
Nicki Amerius-Sargeant, MFT
Kai Arden, MD
James Bae, MD
Michael Bala, MFT
Jeffrey Moulton Benevedes, PhD
Heather Braley, MFT
Carolyn Bray, PhD
Susan Calfee, PhD, MFT
Sheryl Corchnoy, MA
Claire Costello, PhD
Christopher Cunningham, PhD
Carine France, MFT
Patricia Gleeson, MFT
Lori Goldrich, PhD
Robin Greenberg, MFT
Frances Hatfield, PhD
Steven Herrmann, PhD
Peter Holland, MD
Mary Jo Huetteman, PhD, MSW

Patricia Kuljian, PhD
Helen Marlo, PhD
Felicia Matto-Shepard, MFT
D. Steven Nouriani, PhD, MFT
Alexander Peer, PhD
Jane Reynolds, PhD
Khenu Singh, MD
Dorothy Stump, MFT
Mary Valtierra, PhD

Supervisors

Shira Barnett, MSW
Lauren Cunningham, MSW
Lori Goldrich, PhD
Robin Greenberg, MFT
Christine Hejinian, PhD
Tom Kirsch, MD
Gale Lipsyte, PhD
Naomi Lowinsky, PhD
Johanna Mayer, PhD
Carol McRae, PhD

Howard Pollack, MFT
Suzy Spradlin, PhD
Robert Tyminski, DMH
Richard Willetts, PhD

Didactic Presenters

Claire Allphin, PhD
Anita Barzman, MD
Ellen Becker, MFT
John Beebe, PhD
Claire Costello, PhD
Diane Deutsch, PhD
Gail Grynbaum, PhD
Jean Kirsch, MD
Marty Lawlor, MFT
Gale Lipsyte, PhD
Carol McRae, PhD
Ruth Palmer, MS
Tom Richardson, PhD
Alan Ruskin, PhD
Susan Ruskin, MSW

TRANSITIONS

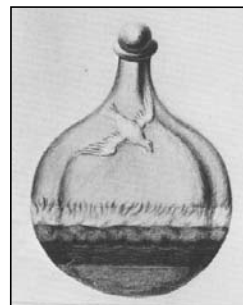
July 2009 – June 2010

NEW ANALYSTS

Justin Hecht
Steve Zimmelman

RETURNING ANALYSTS

Michael Horne
Peter Rutter



LEGACY GIFTS

The Institute is especially grateful to those individuals who have supported our on-going viability with bequests. These legacy gifts, which help us build our endowment, serve to sustain the Institute over time.

This year we thank **Ruth Hammond**, who left the Institute a generous bequest in her estate.

If you are developing an estate plan, please consider making a difference for the Institute by naming us in your will. Such gifts ensure that you leave a legacy that has an impact far into the future that expresses your values.

We wish to acknowledge the following donors who have named the Institute in their wills. Please let us know if you have made a legacy gift and wish to be listed, or are thinking about doing so and would like to learn more about different ways you might arrange a bequest.

Anonymous
Barbara Arden Adams
Claire Allphin
Ellen Becker
John Beebe
Susan Bostrom-Wong
Kay Bradway
Marie & Brian Collins
Penelope Dinsmore
Laurie Edwards
Adam L. Frey
Helen Griffin
Howard Hamburger



IMAGE: FEMALE DEITIES PARTICIPATE IN THE EMERGENCE OF THE CREATIVE RAM-GOD FROM A LOTUS, OFFERING AN IMAGE OF THE ONGOING AND ETERNAL POWER OF NATURE. GOLD AND LAPIS LAZULI PENDANT, CA 946-720 B.B.E., LIBYA

Ruth & Gareth Hill
Jean & Thomas Kirsch
Elizabeth M. Lewis
Naomi Ruth Lowinsky
Betty De Shong Meador
Kathleen Meagher
Ann M. Paras
Bonnie & Richard Payne
William Riess
Karen Signell
Patricia Spake
Frederick B. Steele
Joan Alpert Wentz

INSTITUTE FINANCES

July, 2009 - June, 2010

FISCAL YEAR ENDING JUNE 30, 2010

REVENUE/EXPENSE BY PROGRAM	09 - 10 INCOME	09 - 10 EXPENSE
Administrative Personnel	-	184,117
Professional Services	-	49,615
Administration and Website	1,107	47,069
Building		42,842
Membership	174,657	93,124
Board of Governors	2,600	7,906
Training Program	54,932	25,380
Institute Community	60	5,572
Development *	68,688	17,927
ARAS	5,950	18,425
Clinic	149,512	93,125
Library	5,866	47,974
Jung Journal	44,136	47,881
Extended Education	206,386	235,555
Friends of the Institute	9,602	7,895
Child Training Program	9,100	9,331
Scholarship & Research	-	1,500
Publications	4,784	-
International Student	13,150	13,217
Investments **	149,655	23,196
Endowment ***]	71,466	
TOTALS	971,651	971,651

* Development income represents unrestricted donations. The Institute also received \$75,622 in donations earmarked to specific programs. These gifts are recorded as income of the specific programs.

** Investments represent interest and dividend income and investment advisory fees. This does not include the unrealized gain or loss on the Endowment investments.

*** Draw from Endowment. Our policy is to keep investment income plus draw below 5% of Endowment, based on a rolling three year average of Endowment value. The Institute has been a registered California non-profit public benefit corporation since 1964 and is federally registered as a tax exempt 501(c)(3) educational charity. Federal tax ID number 94-6108904. Gifts are tax deductible. The figures shown here are unaudited. Our finances are audited independently each year by the firm of Buckley, Patchen, Riemann & Hall and copies of the fiscal year 2010 audit will be available in the fall. Copies of our complete audited financial report, as well as copies of our Form 990 are available free of charge to our members and donors, as well as to any interested member of the public.

THE MISSION OF THE INSTITUTE

Analytical psychology is the theoretical foundation for Jungian analysis, a healing practice that serves the basic human need for psychological consciousness and growth. The C.G. Jung Institute of San Francisco was founded to advance a viewpoint vital to the conscious, ethical practice and utilization of analytical psychology and to disseminate knowledge central to that end.

The Institute trains psychotherapists to become Jungian analysts and maintains a collegial society to provide continuing education and ethical review for member analysts. It offers education and information to other professionals and the general public and promotes research about Jungian analysis and psychotherapy. It maintains the Virginia Allan Detloff Library and the Archive for Research in Archetypal Symbolism as educational resources. Through the James Goodrich Whitney Clinic, Jungian psychotherapy is provided on a sliding-scale basis.

The Institute recognizes that the potential of wholeness and individuation depends on psychological development that in turn is supported or hampered by collective attitudes and laws. With this understanding, the C.G. Jung Institute of San Francisco supports in principle efforts that promote universal human rights.

Officers of The C.G. Jung Institute

We are enormously grateful for the time and dedication of all our candidates and members who contribute untold hours to our programs. Special gratitude goes to those analysts who have served as officers of the Institute, positions that require wholehearted devotion and commitment. The officers for the period of September 1, 2009 through August 31, 2010 are:



President

Vice-President

Secretary

Treasurer

Sam Kimbles

Christine Hejinian

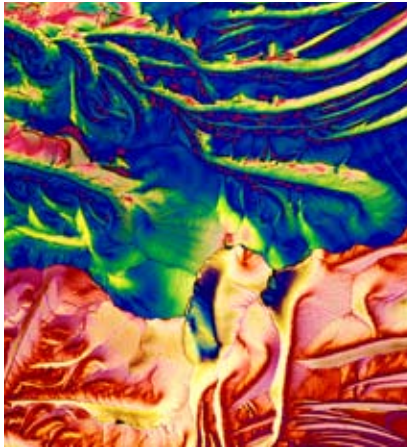
Gale R. Lipsyte

Margo Leahy



Statement of Non-Discrimination

The Institute's programs and services are provided without discrimination on the basis of race, color, national or ethnic origin, sexual orientation, or gender.



THE C.G. JUNG INSTITUTE OF SAN FRANCISCO

2040 Gough Street, San Francisco, CA 94109

phone: 415-771-8055 • fax: 415-771-8926

email: jungmail@sfjung.org

website: www.sfjung.org